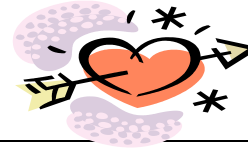


**DENNIS TOWNSHIP
February 2012**



PRIMARY MENU

Visit our Website at: www.nsfm.com

Lunch Menu	Monday	Tuesday	Wednesday	Thursday	Friday
<p>Prices:</p> <p>Student Paid: \$2.20 Student Reduced; \$0.40 Adult Lunch \$3.50 Milk: \$.65</p> <p>Ala Carte and Snacks \$0.25 TO \$1.00</p>			<p>1</p> <p>Chicken Fajita on Soft Shell Kernal Corn</p> <p>Ice Cream Novelty LF Milk Choice</p>	<p>2</p> <p>Grilled Cheese Tomato Soup Pepperidge Farm Crackers</p> <p>Apple Slices LF Milk Choice</p>	<p>3</p> <p>Bayshore Pizza</p> <p>Garden Veggie Salad Choice dressing Fruit Medley LF Milk Choice</p>
<p>Available Daily:</p> <p>Peanut Butter & Jelly Assorted Deli Sandwiches Assorted Salads w/Dressings Fresh Fruit </p> <p>Milk Choices: 1%, White, Choc. Strawberry, Skim</p>	<p>6</p> <p>Hot Roast Pork Sandwich on Club Roll Broccoli Florettes</p> <p>Puttting w/Topping LF Milk Choice</p>	<p>7</p> <p>Chicken Parmesan w/ Side of Spaghetti Green Beans</p> <p>Peaches & Cream LF Milk Choice</p>	<p>8</p> <p>Cheese Buger Special Dressing on Soft Bun Potato Rounds</p> <p>Pears with Cherry on Top LF Milk Choice</p>	<p>9</p> <p>Chicken Nuggets Buttery Rice Peas & Carrots</p> <p>Jello w/Topping LF Milk Choice</p>	<p>10</p> <p>Gem's Pizza</p> <p>Celery & Carrot Sticks</p> <p>Fresh Fruit in Season LF Milk Choice</p>
<p>What's New this Month...</p> <p><i>Vegetable of the Month:</i> Celery Sticks</p> <p><i>Fruit of the Month:</i> Pears</p>	<p>13</p> <p>Hot Dogs on Soft Bun Vegetarian Baked Beans</p> <p>Pink Applesauce LF Milk Choice</p>	<p> 14</p> <p>Love'n Hot Turkey Sandwich Sweet Mashed Potatoes with Marshmallow Topping Beautiful Broccoli Ice Cream Novelty LF Milk Choice</p>	<p>15</p> <p>French Bread Pizza</p> <p>Caesar Salad</p> <p>Mixed Fruit Cup LF Milk Choice</p>	<p>16</p> <p>SCHOOL CLOSED</p>	<p>17</p> <p>SCHOOL CLOSED</p>
<p>Prepaid lunch tickets available Checks preferred make payable to DENNIS TOWNSHIP BOARD OF ED.</p> <p>Balloons for Balanced Lunch</p> <p>Orange = Grains Green = Vegetables Red = Fruits Blue = Milk Purple = Meat & Beans Yellow=Oils & X Energy</p>	<p> 20</p> <p>SCHOOL CLOSED</p>	<p>21</p> <p>Cheese Burger on Soft Bun Oven Fried Potatoes</p> <p>Green Beans Peach Halves LF Milk Choice</p>	<p>22</p> <p>Ash Wednesday</p> <p>Grilled Cheese Sandwich Tomato Soup Pepperidge Farm Crackers Pineapple Chunks LF Milk Choice</p>	<p>23</p> <p>Lasagna w/Meatsauce Italian Mixed Vegetables Garlic Break</p> <p>Pears w/Cherry Topping LF Milk Choice</p>	<p>24</p> <p>Bayshore Pizza</p> <p>Celery & Carrot Sticks</p> <p>Fruit Cup LF Milk Choice</p>
	<p> 27</p> <p>Meatloaf w/Gravy Buttery Mashed Potatoes Peas</p> <p>Puttting w/Topping LF Milk Choice</p>	<p>28</p> <p>Spaghetti w/Meatsauce Dinner Roll</p> <p>Garden Salad Applesauce LF Milk Choice</p>	<p>29</p> <p>Chicken Pattie on Soft Bun Carrot Coins</p> <p>Peaches and Cream LF Milk Choice</p>		
<i>Menu subject to change without notice *</i>		F.Rollen extension 107	e-mail: frolen@nsfm.com		

